

Travel information

Participants will be responsible for their own travel arrangements.

Moscow is serviced by three international airports:

[Sheremetyevo](#) (SVO, 29 km northwest of the city center),

[Domodedovo](#) (DME, 42 km south of the city center)

[Vnukovo](#) (VKO, 28 km southwest of the city center).

Some general information regarding transportation from the airports to the city can be found at:

<http://www.tripadvisor.com/Travel-g298484-s301/Moscow:Russia:Arriving.And.Departing.html>

Moscow Metro map: http://news.metro.ru/sc_lat.html

Aeroexpress train: <http://aeroexpress.ru/en/>

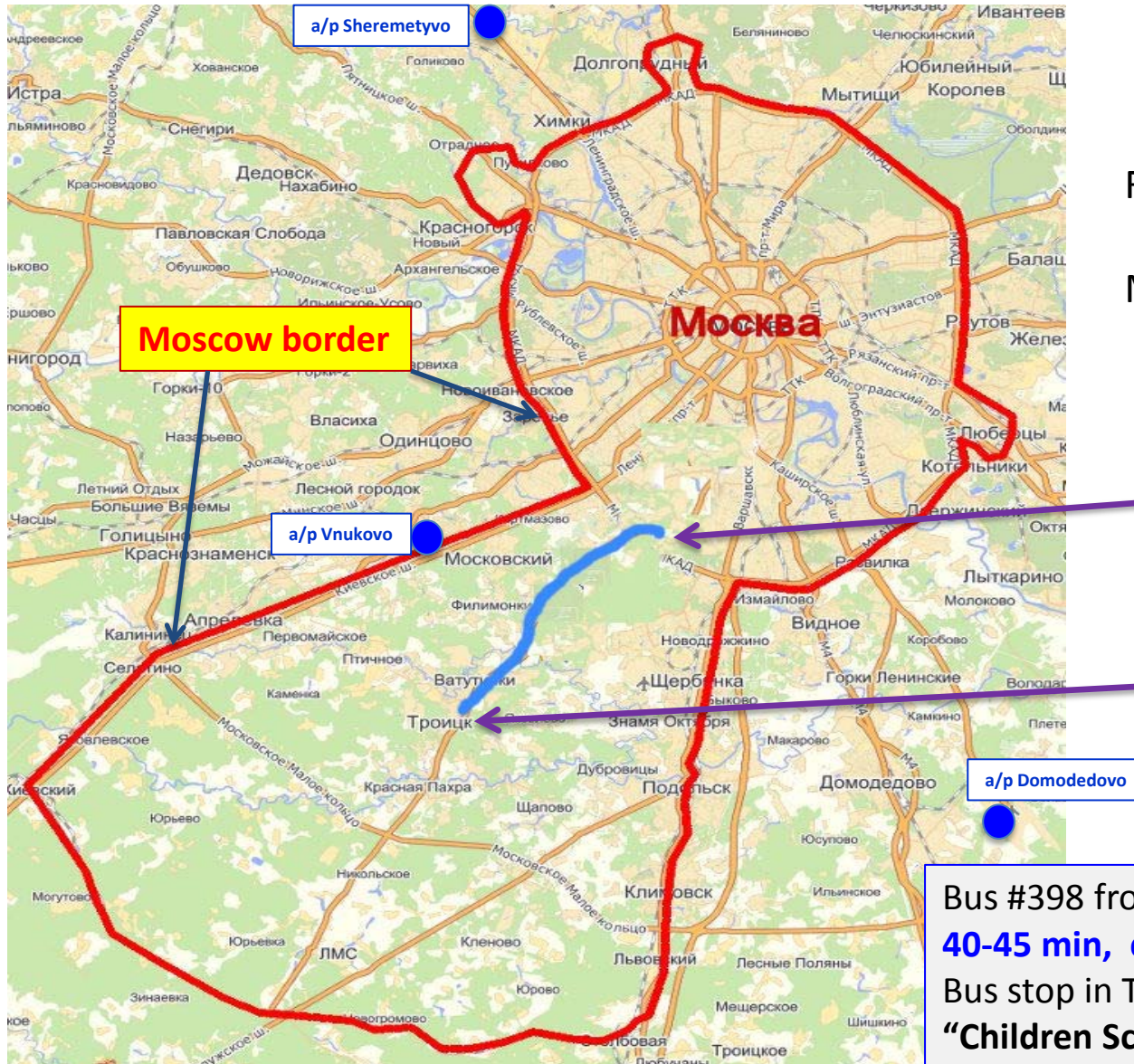
Moscow metro map



Metro Tyoply stan
Метро Теплый Стан

to Troitsk

Moscow center → Troitsk



From Moscow center
to
Metro station **Tyoply stan**
~ 30 min

Metro Tyoply stan
Метро Теплый стан

Troitsk
Троицк

Bus #398 from Metro Tyoply stan to Troitsk
40-45 min, cost 50 rub cost (~ 0.8 euro)

Bus stop in Troitsk:

“Children School of Arts”

“Детская школа искусств”

**Transportation
from metro Tyoply Stan
to Conference venue.**

- 1. Conference bus**
- 2. Public bus**

1.Conference bus

Two conference buses depart from metro station Tyoply Stan at:

9:00	6 July
7:45	7 July
7:45	8 July
7:45	9 July

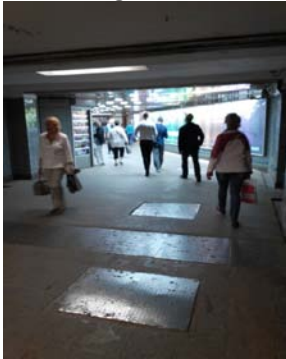
PD15 participants should gather at the public bus stop **#398**
(how to find bus stop - see next page)

A member of the LOC will meet participants at the bus stop with the sign **PD15**. Buses will have the sign **PD15** on front window.

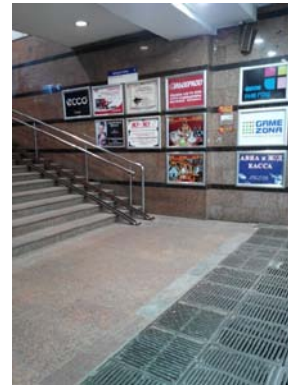
2. Public bus

Public bus #398 can also be used to reach the conference venue

1. Take Moscow Metro to the Tyoply Stan station (Orange Line, bottom). This station has two exits. You should use closest exit to the first carriage of train (direction from centre to south). After exit turn to the right.



2. Go forward ~20 m. At the first exit turn to the left. Go upstairs. You should see “Банк Москвы” (“Bank of Moscow”) sign.



3. Go outside. Then turn to the left and go forward ~20 m. You should see yellow label at bus stop. Take bus **#398**. One way ticket costs 50RUB, cash only, buy from the bus driver.



4. Bus departs every 15 min. It takes about 40 min to reach Troitsk (exact time depends on traffic).

Venue of PD15



**Children School of Arts
Moscow, Troitsk, October pr. 12.**

Transportation from the conference venue to metro Tyoply Stan

**Conference buses depart
the conference venue in Troitsk at:**

19:30	6 July
21:00	7 July
18:30	8 July
14:00	9 July

Public transportation

**Public buses depart from Troitsk to metro Tyoply Stan every 15 min.
The nearest bus stop is in front of Children School of Arts,
across October prospect**